

The ProControl 2

and the Motion Control Hand

For the way you live



The ProControl 2 with the Motion Control Hand (or ETD) offers a wide variety of fitting options for the below elbow amputee, including single-site and force sensor control options.

For more information,
call 1.888.MYO.ARMS (696.2767)
or visit www.UtahArm.com

Motion Control

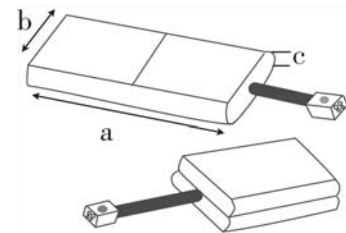
It's all about

Options

For Hands, TDs and Hand Controllers



The flexion wrist option allows the MC Hand (or ETD) to bend 30° in flexion or extension for more natural hand positioning

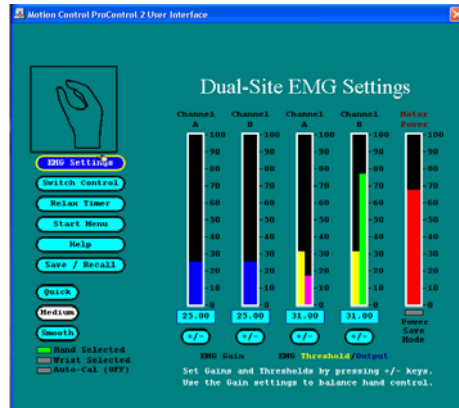


ProControl 2 vs. ProHand:

ProHand = controller inside the TD. Use for:

- when you have only one TD and/or function.
- when replacing an OB hand
- when size and weight must be minimized

ProControl 2 = controller inside the arm. Use when you have two or more TDs and/or electric wrist.



New 3.0.0 version can be changed to Dual site, 'First over', or Single Site with just a keystroke.

Control Options:

Classic dual-site EMG

2-Site EMG 'First Over'- for wearers lacking independent signals

NEW Single-Site EMG- simplified one-muscle control

Force Sensor Control- easy to learn, like the new Single-Site

Use other manufacturers' inputs with the ProControl 2 or ProHand (call for specifics).

NEW Equalizer feature allows interchange of MC TDs with other manufacturers' TDs.

Electrode Options:

Now choose from High Profile, Low Profile or Snap electrodes.



Wire Harness Options:

Basic Wire Harness (standard)

Hybrid harness choices- use with Hosmer Elbow or Otto Bock elbows

NEW Switch Options

- for *simultaneous control* of wrist via rocker switch (or other).
- as a backup to co-contraction

Adaptors- Options for mixing and matching TDs, Batteries, etc.

Battery Options:

External:

(with holder: 3.5" x 1.36" x .65")

Internal: choose from 2 sizes:

	a	b	c
Long:	4.0"	1.35"	.31 ^{to} .44"
Short:	2.15"	1.3"	0.6"

Watch for more sizes to come!

TD Options and Relative Sizes:

All TD's available in standard or ProHand version

